

DIY 48V 16S BATTERY BOX

280/ 302/ 306/ 304/ 314/ 320Ah



Step 1. Tear off the long epoxy insulation sheet and tape it to the inside of the box



Step 2. Test the cells
Make sure the voltage is consistent



Step 3. Stick on the EVA tapes, Please notice if your cells are swollen, we don't recommend sticking the EVA tapes on.



Step 4. Put on the epoxy boards, and put the cells one by one, each cell has one epoxy board between

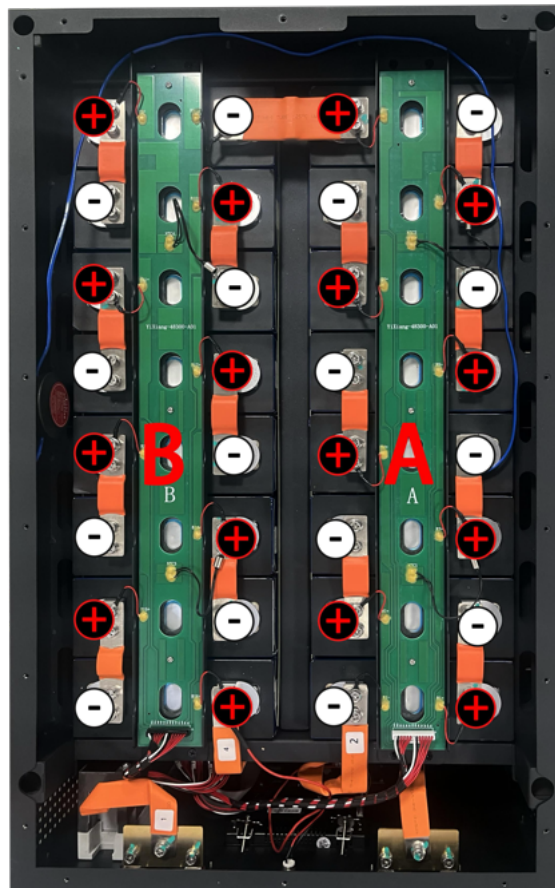


Attention1:

1, Make sure the cells are in the right place

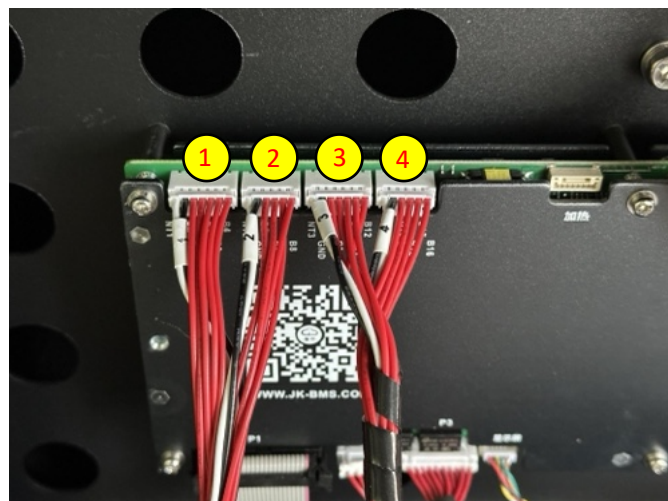
2, Put the B-board on the left, A-board on the right side

3. The battery is placed as shown in the picture.



Attention2:

1, Before assembly, please check the connection line sequence of BMS (1- 2- 3- 4)



Step 5. BMS Wiring

As shown in the picture

【1】 【2】 BMS wiring harness is inserted into the PCB strip at A

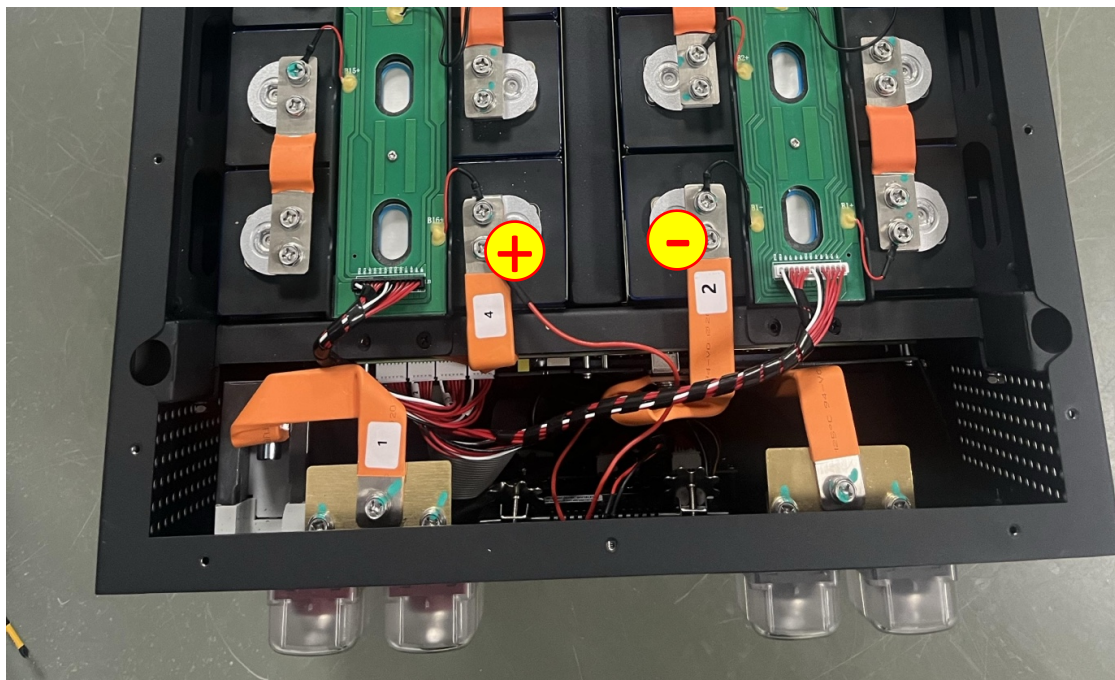
【3】 【4】 BMS wiring harness is inserted into the PCB strip at B

Attention3:

Flexible busbar connection,

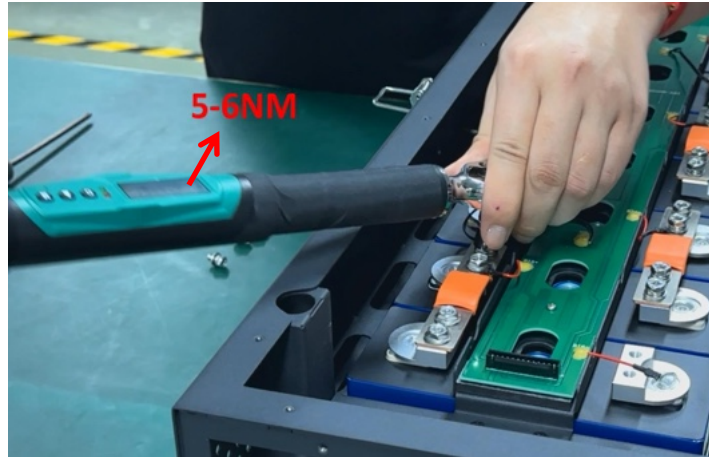
No. 4 connects to the positive pole (B)

No. 2 connects to the negative pole (A)



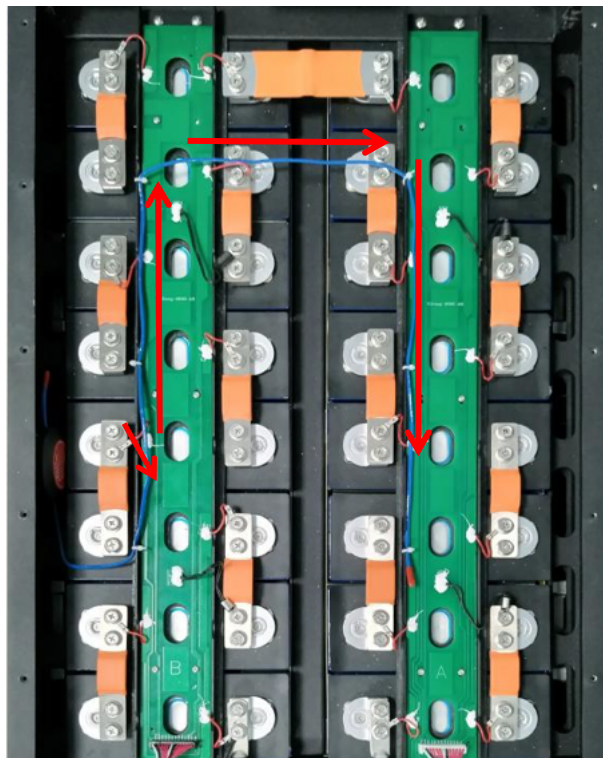
Precautions:

1. Use 5-6NM torque to tighten the battery cell screws



2. Because our box is pre-assembled, check whether the positive and negative screws and the circuit breaker screws are locked before assembly.

3. The fire extinguishing aerosol line is installed as shown in the figure



Scan the QR code to view the wiring installation video

Step 6. Battery Pack Fix

Lock the box, box cover and front plate . And we finish assembling the 51.2V 280Ah battery pack.

